

COLOR CHART

MN บริษัท แม่น้ำมิทอลซ์พลาเย จำกัด
METAL SUPPLY Mae Num Metal Supply Co., Ltd.

1334/13-19 ถ.พระราม 3 ซ.52 ซ่งนนทรี ยานนาวา กรุงเทพฯ 10120

1334/13-19 Rama 3 Rd. Soi 52 Chongnonsee Yannawa Bangkok 10120

Tel : (66) 2294-7479 (10 Lines) Fax : (66) 2294-6429, 681-3086

<http://www.maenum.com> E-mail : info@maenum.com

MN
METAL SUPPLY

SAHARA EFFECTS



www.maenum.com

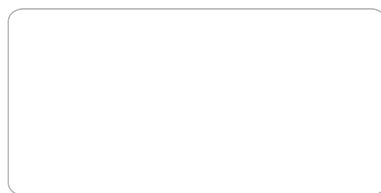
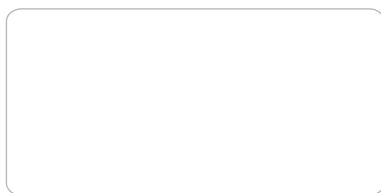
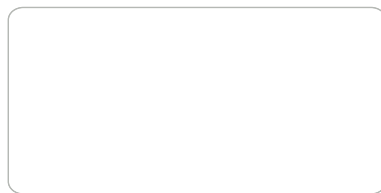
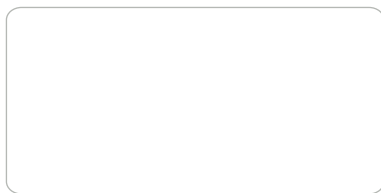
Sahara color series is suitable for decorating and protecting metal surfaces. Whether you're looking to enhance aluminium facades, windows frames, domestic appliances, structured steel, or metal furniture and fixtures, Sahara Effects powder coatings will add a touch of sophistication to the finishing. Available in classic and metallic ranges.

Description	Norm	Series 1301	Series 1303	Series 1307	Series 1308
Glass*	EN ISO 2813 (60°)	12 ±5	30 ±5	77 ±7	90 ±10
Finish	Visual	Soft Texture	Smooth	Smooth	Smooth
Adhesion	EN ISO 2409 (2mm)	Cross-cut rating Gt0 (100% adhesion).			
Impact resistance	EN ISO 6272/ASTM D2794 (impactor diameter 15.9mm)	More than 23 inch-pounds or 2.5 Nm without film cracking.			
Cupping test	EN ISO 520	Indentation depth in excess of 5mm without film cracking.			
Flexibility	EN ISO 519	Cylindrical Mandrel bending test, passes 5mm mandrel diameter.			
Film hardness	EN ISO 2815	Indentation resistance according to Buchholz: >80.			
Mortar resistance	EN 12206-1	The mortar must be easy to remove without leaving any residues.			
Drilling, milling and sawing test		No flaking of coating.			
Neutral salt spray resistance	ASTM B1177	No blistering or loss of adhesion after 1,000 hours.			
Humidity resistance containing SO ₂	EN ISO 3231 (0.2 ISO ₂)	No infiltration exceeding 1mm on both sides of the scratch after 30 cycles.			
Humidity resistance	EN ISO 6210-2	No infiltration exceeding 1mm on both sides of the scratch after 1,000 hours.			
Acetic acid salt spray resistance	ISO 9227	After 1,000 hours testing-maximum 16mm ² infiltration over a scratch length of 10cm.			
Accelerated weathering	DUN EN ISO 11507 (UVB-313)	Cycle: 4 hours at 50°C UV and 4 hours at 40°C condensation. No chalking, excellent gloss retention and colour stability after 300 hourstesting.			
Accelerated weathering	DUN EN ISO 11507 (UVB-340)	Cycle: 8 hours at 60°C UV and 4 hours at 45°C condensation. No chalking, excellent gloss retention and colour stability after 1,000 hourstesting.			
Natural weathering test	ISO 2810 (South Florida 27°N)	No chalking, excellent gloss retention and colour stability after 12 months exposure (angle of 5° to South).			
Surface spread of flame	BS 476 part 7-1997	Class 1			
Fire propagation test	BS 476 part 6-1989	Excellent index of performance (I=1).			
Total Solar Reflectance **	ASTM C 1549	Grades 1303R, 1307R and 1308T: TSR ≥ 0.25			

* If the significant surface is too small or unsuitable for the gloss to be measured with the glossmeter, the gloss should be compared visually with the reference sample (from the same viewing angle).

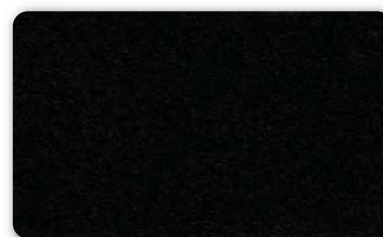
** Only applicable to Corro-Coat PE-F Series 1303, 1307 and 1308 for the colours featured in the 'Cool Shades Collection'.

Note: The information on this Product Data Sheet is given to the best of the manufacturer's knowledge, based on laboratory testing and practical experience. Maenum Metal Supply Co., Ltd. reserves the right without notice to alter or change the content of this Product Data Sheet.



Sahara Effects

MAENUM's Sahara Effect Colour Palette represents an array of rich colours with textural depth for a dramatic appeal and a long lasting impression.



MN02823 Ebony Black



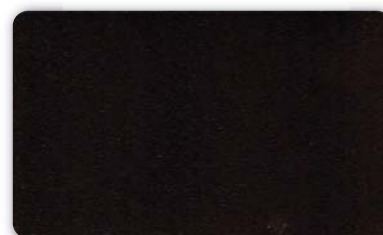
MN22424 Sahara Silver Sparkle



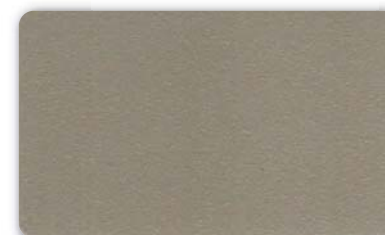
MN02831 Texture Grey



MN02822 Aztec Grey



MN22181 Dark Brown



MN17201 Champagne



MN02825 Infinity White



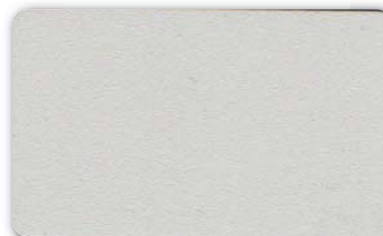
MN02835 Titanium Silver



MN02836 Sand Beige



MN02830 Dark Brown Anodize



MN12217 Light Grey



MN17329 Firestone



MN16937 Silver Sparkle*

